

*Jumei Glamping*

**LUXURY LODGE TENT**

DELUXE RESORT TENT &

# 星级酒店 帐篷建筑

STAR-RATE GLAMPING TENT & STRUCTURE



Z 臻



Y 曜



H 幻



M 魅

PRODUCT  
CATEGORIES

产品分类

# Z

## 臻系列

### Z SERIES



32m<sup>2</sup>



62m<sup>2</sup>



80m<sup>2</sup>

#### 1 Structure

- Framework: Steel tube, aluminum cladding
- Tube Size: 80x80x4mm

#### 2 Roof Cover

- Roof Cover: PVDF architectural membrane
- Weight: 1050g/m<sup>2</sup>

#### 3 Door & Windows

- Door & Windows: Double glaze glass
- Specifications: 5+20A+5mm

#### 4 Outer Walls

- Outer Wall: Double glaze glass
- Specifications: 5+20A+5mm

# INNER CONFIGURATION | PRODUCT BREAKDOWN



## Inner Wall

- Luxurious wood veneer wall
- Various layout options



## Cupboard

- Integrated storage cupboard, wardrobes
- Maximum space utilization



## Bathroom

- Ceramic tile, aluminum wall panel, separated shower
- Top brand sanitary ware

Z1

外部展示

# EXTERIOR STYLE

## Standard Configuration

- Structure
- Roof
- 1 Door 3 Windows
- Outer Walls

## Specifications

- |                             |                                  |                                    |                                    |
|-----------------------------|----------------------------------|------------------------------------|------------------------------------|
| • Model: Z1                 | • Layout: Standard room          | • Projected Area: 65m <sup>2</sup> | • Indoor Area: 32m <sup>2</sup>    |
| • Top Height: 6.5m          | • Wall Height: 2.8m              | • Exterior Size: 9mx10m            | • Indoor Size: 6mx7m               |
| • Wind Resistance: Level 10 | • Roof Load: 25KG/m <sup>2</sup> | • Lifespan: 30 Years               | • Moderate Temperature: -30°C~50°C |





# Z1

## Optional Interior Configuration & Furniture

### Configuration

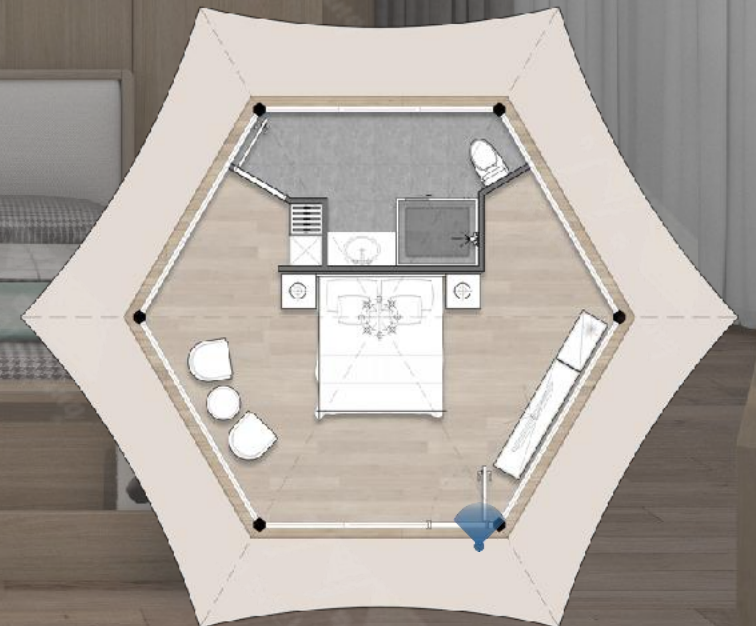
- Walls: Wood Veneer Wall Panel
- Cupboard: Wood Veneer Cupboard
- Flooring: PVC Flooring
- Ceiling: Elastic Fabric
- Separated Bathroom: Glass door, Tile & Aluminum Wall
- Bathroom Facilities: Toilet, Sink, Shower set, Towel Rack

### Furniture

- Solid Wood Bed/Mattress x1
- Nightstand x2
- Occasional Chairs x2
- Occasional Table x1
- TV Stand x1
- Sideboard x1
- Curtain x1
- Blink x1
- TV x1
- Air Conditioner x1
- Water Heater x1
- Chandelier x1



Floor Plan 32m<sup>2</sup>



# Z2

外部展示

## EXTERIOR STYLE



### STANDARD CONFIGURATION

Structure, Roof Cover, 1 Door 5 Windows, Outer Walls

#### Specifications

- Model: Z2
- Projected Area: 98m<sup>2</sup>
- Exterior Size: 9mx14m
- Top Height: 6.5m
- Wind Resistance: Level 10
- Lifespan: 30 Years
- Layout: 1 Living Room, 1 Bedroom
- Indoor Area: 62m<sup>2</sup>
- Indoor Size: 6.5mx11m
- Wall Height: 2.8m
- Roof Load: 25KG/m<sup>2</sup>
- Moderate Temperature: -30°C~50°C

SIMPLE AND  
ELEGANT



# Z2

## Optional Interior Configuration & Furniture

### Configuration

- Walls: Wood Veneer Wall Panel
- Cupboard: Wood Veneer Cupboard
- Flooring: PVC Flooring
- Ceiling: Elastic Fabric
- Separated Bathroom: Glass door, Tile & Aluminum Wall
- Bathroom Facilities: Toilet, Sink, Shower set, Towel Rack

### Furniture

- Solid Wood Bed/Mattress x1
- Nightstand x2
- Occasional Chairs x2
- Occasional Table x1
- TV Stand x2
- Sideboard x1
- Kitchette x 1
- Diner Table x1 Diner Chairs x2
- 3-piece Sofa x1 Tea Table x1
- Curtain x1 Blink x1
- TV x2 Air Conditioner x2
- Water Heater x1 Chandelier x2



Floor Plan 62m<sup>2</sup>





Z3

外部展示

# EXTERIOR STYLE

## STANDARD CONFIGURATION

Structure, Roof Cover, 1 Door 8 Windows, Outer Walls



Z3(HOT SALE!)

### Specifications

- Model: Z3
- Projected Area: 132m<sup>2</sup>
- Exterior Size: 10mx17m
- Top Height: 6.5m
- Wind Resistance: Level 12
- Lifespan: 30 Years
- Layout: 1 Living Room, 2 Bedrooms
- Indoor Area: 80m<sup>2</sup>
- Indoor Size: 7.8mx14.5m
- Wall Height: 2.8m
- Roof Load: 25KG/m<sup>2</sup>
- Moderate Temperature: -30°C~50°C





# Z3

## Optional Interior Configuration & Furniture

### Configuration

- Walls: Wood Veneer Wall Panel
- Cupboard: Wood Veneer Cupboard
- Flooring: PVC Flooring
- Ceiling: Elastic Fabric
- Separated Bathroom: Glass door, Tile & Aluminum Wall
- Bathroom Facilities: Toilet, Sink, Shower set, Towel Rack

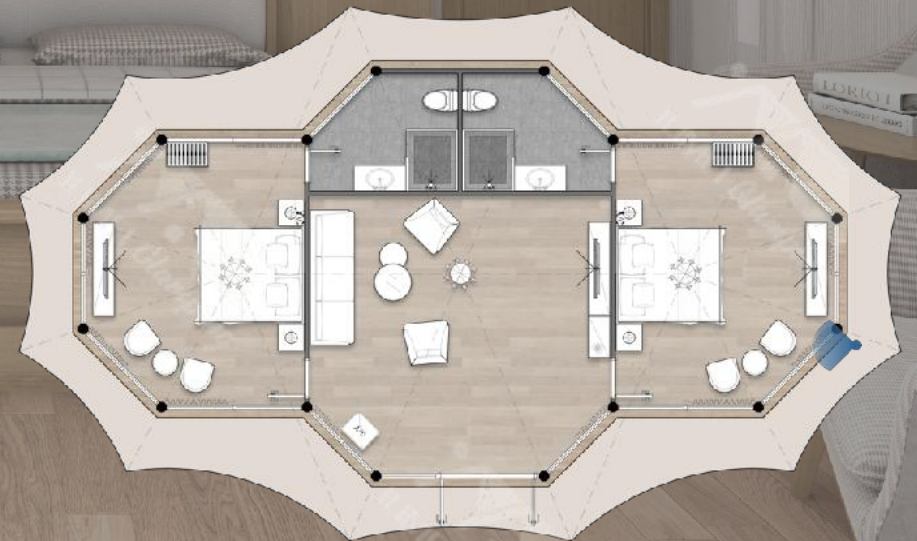
### Furniture

- Solid Wood Bed/Mattress x2
- Nightstand x4
- Occasional Chairs x4
- Occasional Table x2
- Wardrobe x2
- Sideboard x1
- Curtain x1
- TV x3
- Tea Table x1
- 3+1+1 Sofa x1
- Air Conditioner x3
- Water Heater x2
- Chandelier x3

Blink x1  
TV Stand x3



Floor Plan 80m<sup>2</sup>



# Y

## 曜系列

### Y SERIES



#### 1 Structure

- Framework : Steel tube, aluminum cladding
- Tube Size : 80x80x4mm

#### 2 Roof Cover

- Roof Cover : PVDF architectural membrane
- Weight : 1050g/m<sup>2</sup>

#### 3 Door & Windows

- Door & Windows : Double glaze glass
- Specifications : 5+20A+5mm

#### 4 Outer Walls

- Outer Wall : Double glaze glass
- Specifications : 5+20A+5mm

Y1

外部展示

# EXTERIOR STYLE

## Standard Configuration

- Structure
- Roof
- 1 Door 3 Windows
- Outer Walls

## Specifications

- |                             |                                  |                                     |                                    |
|-----------------------------|----------------------------------|-------------------------------------|------------------------------------|
| • Model: Y1                 | • Layout: Standard room          | • Projected Area: 141m <sup>2</sup> | • Indoor Area: 43m <sup>2</sup>    |
| • Top Height: 6.8m          | • Wall Height: 2.8m              | • Exterior Size: 10mx10m            | • Indoor Size: 7.3mx7.3m           |
| • Wind Resistance: Level 10 | • Roof Load: 25KG/m <sup>2</sup> | • Lifespan: 30 Years                | • Moderate Temperature: -30°C~50°C |



DEELUXE



# Y1

## Optional Interior Configuration & Furniture

### Configuration

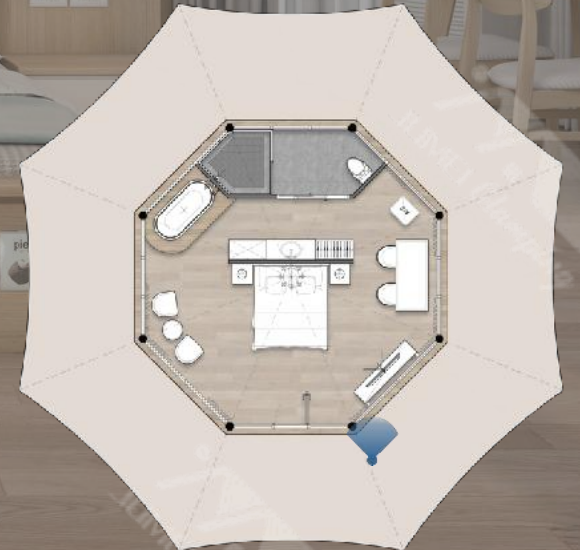
- Walls: Wood Veneer Wall Panel
- Cupboard: Wood Veneer Cupboard
- Flooring: PVC Flooring
- Ceiling: Pleated Fabric
- Separated Bathroom: Glass door, Tile & Aluminum Wall
- Bathroom Facilities: Toilet, Sink, Shower set, Towel Rack

### Furniture

- Solid Wood Bed/Mattress x1
- Nightstand x2
- Occasional Chairs x2
- Occasional Table x2
- TV Stand x1
- Diner Table x1
- Diner Chairs x1
- Bathtub x1
- Curtain x1
- Blink x1
- TV x1
- Air Conditioner x1
- Water Heater x1
- Chandelier x1



Floor Plan 43m<sup>2</sup>



Y2

外部展示

# EXTERIOR STYLE

## STANDARD CONFIGURATION

Structure, Roof Cover, 1 Door 5 Windows, Outer Walls

### Specifications

- Model: Y2
- Projected Area: 180m<sup>2</sup>
- Exterior Size: 12mx20m
- Top Height: 6.8m
- Wind Resistance: Level 10
- Lifespan: 30 Years
- Layout: 1 Living Room, 1 Bedroom
- Indoor Area: 62m<sup>2</sup>
- Indoor Size: 5.6mx13m
- Wall Height: 2.8m
- Roof Load: 25KG/m<sup>2</sup>
- Moderate Temperature: -30°C~50°C



DELUXE AND  
ELEGANT



# Y2

## Optional Interior Configuration & Furniture

### Configuration

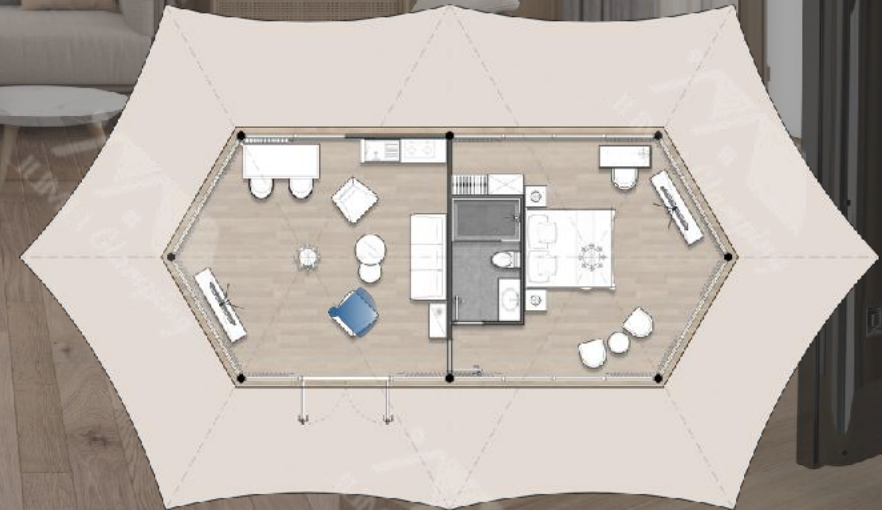
- Walls: Wood Veneer Wall Panel
- Cupboard: Wood Veneer Cupboard
- Flooring: PVC Flooring
- Ceiling: Pleated Fabric
- Separated Bathroom: Glass door, Tile & Aluminum Wall
- Bathroom Facilities: Toilet, Sink, Shower set, Towel Rack

### Furniture

- Solid Wood Bed/Mattress x1
- Nightstand x2
- Occasional Chairs x2
- Occasional Table x1
- TV Stand x1
- Diner Table x1
- Diner Chairs x1
- 3+1+1 Sofa x1
- Tea Table x1
- Curtain x1
- Blink x1
- TV x2
- Air Conditioner x2
- Water Heater x1
- Chandelier x2



Floor Plan 62m<sup>2</sup>



Y3

# EXTERIOR STYLE

外部展示



## STANDARD CONFIGURATION

Structure, Roof Cover, 1 Door 7 Windows, Outer Walls

### Specifications

- Model: Y3
- Projected Area: 233m<sup>2</sup>
- Exterior Size: 12mx22.5m
- Top Height: 6.8m
- Wind Resistance: Level 12
- Lifespan: 30 Years
- Layout: 1 Living Room, 2 Bedrooms
- Indoor Area: 80m<sup>2</sup>
- Indoor Size: 6mx16.5m
- Wall Height: 2.8m
- Roof Load: 25KG/m<sup>2</sup>
- Moderate Temperature: -30°C~50°C

DELUXE AND  
ELEGANT





# Y3

## Optional Interior Configuration & Furniture

### Configuration

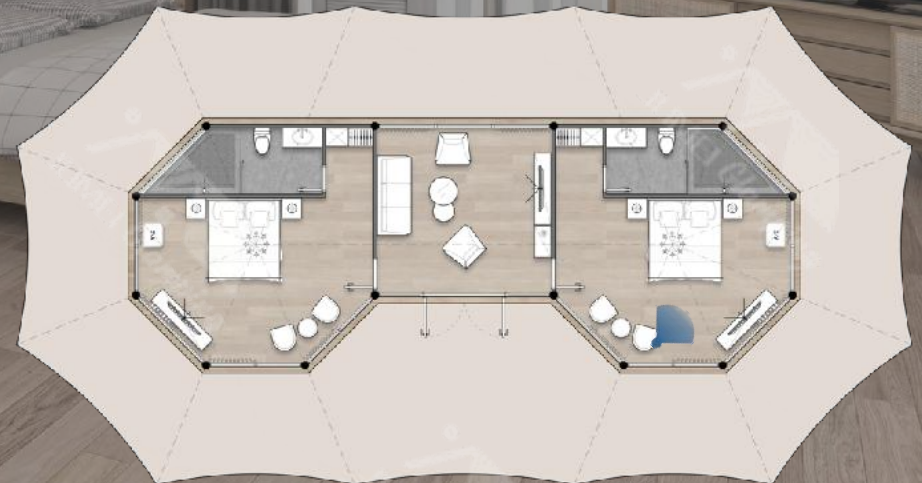
- Walls: Wood Veneer Wall Panel
- Cupboard: Wood Veneer Cupboard
- Flooring: PVC Flooring
- Ceiling: Pleated Fabric
- Separated Bathroom: Glass door, Tile & Aluminum Wall
- Bathroom Facilities: Toilet, Sink, Shower set, Towel Rack

### Furniture

- Solid Wood Bed/Mattress x2
- Nightstand x4
- Occasional Chairs x4
- Occasional Table x2
- TV Stand x3
- Sideboard x1
- 2+1+1 Sofa x1
- Tea Table x1
- Curtain x1
- Blink x1
- TV x3
- Air Conditioner x3
- Water Heater x2
- Chandelier x3



Floor Plan 80m<sup>2</sup>



YS

SPACE

外部展示

# EXTERIOR STYLE



Deck & Rails(Optional)

## Standard Configuration

- Structure
- Roof
- 1 Door 3 Windows
- Outer Walls

## Specifications

- |                             |                                  |                                    |                                    |
|-----------------------------|----------------------------------|------------------------------------|------------------------------------|
| • Model: YS                 | • Layout: Standard room          | • Projected Area: 84m <sup>2</sup> | • Indoor Area: 30m <sup>2</sup>    |
| • Top Height: 6.8m          | • Wall Height: 2.8m              | • Exterior Size: 10mx11.5m         | • Indoor Size: 6mx7m               |
| • Wind Resistance: Level 10 | • Roof Load: 25KG/m <sup>2</sup> | • Lifespan: 30 Years               | • Moderate Temperature: -30°C~50°C |



# YS

## Optional Interior Configuration & Furniture

### Configuration

- Walls: Wood Vener Wall Panel
- Cupboard: Wood Vener Cupboard
- Flooring: PVC Flooring
- Ceiling: Integrated Ceiling
- Separated Bathroom: Glass door, Tile & Aluminum Wall
- Bathroom Facilities: Toilet, Sink, Shower set, Towel Rack

### Furniture

- Solid Wood Bed/Mattress x1
- Nightstand x2
- 2-Piece Sofa x1
- Tea Table x1
- TV Stand x1
- Kitchnette x1
- Diner Table x1
- Diner Chairs x2
- Curtain x1
- Blink x1
- TV x1
- Air Conditioner x1
- Water Heater x1
- Chandelier x1



Floor Plan 42m<sup>2</sup>



YX

CUSTOM

外部展示

# EXTERIOR STYLE



## STANDARD CONFIGURATION

Structure, Roof Cover, Doors & Windows(Custom), Outer Walls

YX

### Specifications

- Model: YX(Custom)
- Projected Area: 440m<sup>2</sup>
- Exterior Size: 17mx29m
- Top Height: 7.5m
- Wind Resistance: Level 10
- Lifespan: 30 Years
- Layout: Lobby, Reception Hall, Function Hall
- Indoor Area: 252m<sup>2</sup>
- Indoor Size: 12mx21m
- Wall Height: 3m
- Roof Load: 20KG/m<sup>2</sup>
- Moderate Temperature: -30°C~50°C



# H

## 幻系列

### H SERIES



30m²



35m²



168m²

## 1 Structure

- Framework: Steel tube, aluminum cladding
- Tube Size: 80x80x4mm

## 2 Roof Cover

- Roof Cover: PVDF architectural membrane
- Weight: 1050g/m²

## 3 Door & Windows

- Door & Windows: Double glaze glass
- Specifications: 5+20A+5mm

## 4 Outer Walls

- Outer Wall: Wood Veneer Wall Panel or Double glaze glass
- Specifications: 5+20A+5mm or 80mm

# H1

外部展示

## EXTERIOR STYLE



### Standard Configuration

- Structure
- Roof
- 1 Door 3 Windows
- Outer Walls

### Specifications

- |                             |                                  |                                    |                                    |
|-----------------------------|----------------------------------|------------------------------------|------------------------------------|
| • Model: H1                 | • Layout: Standard room          | • Projected Area: 64m <sup>2</sup> | • Indoor Area: 30m <sup>2</sup>    |
| • Top Height: 5.3m          | • Wall Height: 2.6m              | • Exterior Size: 8mx8m             | • Indoor Size: 5.5mx5.5m           |
| • Wind Resistance: Level 10 | • Roof Load: 25KG/m <sup>2</sup> | • Lifespan: 30 Years               | • Moderate Temperature: -30°C~50°C |

SIMPLE



# H1

## Optional Interior Configuration & Furniture

### Configuration

- Walls: Wood Veneer Wall Panel
- Flooring: PVC Flooring
- Ceiling: Integrated Ceiling, Solid Wood Beam, Ambient Light
- Separated Bathroom: Glass door, Tile & Aluminum Wall
- Bathroom Facilities: Toilet, Sink, Shower set, Towel Rack

### Furniture

- Solid Wood Bed/Mattress x1
- Nightstand x2
- Occasional Table x1
- Occasional Chair x2
- TV Stand x1
- Wardrobe x1
- Curtain x1
- TV x1
- Air Conditioner x1
- Water Heater x1
- Chandelier x1



# H2

外部展示

## EXTERIOR STYLE



Deck & Rails (Optional)

### STANDARD CONFIGURATION

Structure, Roof Cover, 2 Door 5 Windows, Outer Walls

#### Specifications

- Model: H2
- Projected Area: 92m<sup>2</sup>
- Exterior Size: 10mx10m
- Top Height: 6m
- Wind Resistance: Level 10
- Lifespan: 30 Years
- Layout: Standard Room
- Indoor Area: 35m<sup>2</sup>
- Indoor Size: 5mx7m
- Wall Height: 2.8m
- Roof Load: 25KG/m<sup>2</sup>
- Moderate Temperature: -30°C~50°C

DELUXE AND  
ELEGANT





# H2

## Optional Interior Configuration & Furniture

### Configuration

- Walls: Integrated Wood Vener Wall Panel
- Cupboard: Wood Vener Cupboard
- Flooring: PVC Flooring
- Ceiling: Integrated Ceiling, Bamboo, Solid Wood Beam, Ambient Light
- Separated Bathroom: Glass door, Tile & Aluminum Wall
- Bathroom Facilities: Toilet, Sink, Shower set, Towel Rack

### Furniture

- Solid Wood Bed/Mattress x1
- Nightstand x2
- 2-Piece Sofa x1
- TV Stand x1
- Diner Table x1
- Diner Chairs x2
- Cupboard x1
- Curtain x1
- TV x1
- Air Conditioner x1
- Water Heater x1
- Chandelier x1



Floor Plan 49m<sup>2</sup>



HX

CUSTOM

外部展示

# EXTERIOR STYLE



Custom Design Available

## STANDARD CONFIGURATION

Structure, Roof Cover, 2 Doors & Windows(Custom), Outer Walls

HX

### Specifications

- Model: HX(Custom)
- Projected Area: 250m<sup>2</sup>
- Exterior Size: 16mx19m
- Top Height: 6.8m
- Wind Resistance: Level 12
- Lifespan: 30 Years
- Layout: Luxury Suite, Function Hall
- Indoor Area: 168m<sup>2</sup>
- Indoor Size: 13mx16m
- Wall Height: 3.2m
- Roof Load: 30KG/m<sup>2</sup>
- Moderate Temperature: -30°C~50°C



# M

## 魅系列

### M SERIES



43m<sup>2</sup>



65m<sup>2</sup>



88m<sup>2</sup>

#### 1 Structure

- Framework: Steel tube, aluminum cladding
- Tube Size: 80x80x4mm

#### 2 Roof Cover

- Roof Cover: PVDF architectural membrane
- Weight: 1050g/m<sup>2</sup>

#### 3 Door & Windows

- Door & Windows: Double glaze glass
- Specifications: 5+20A+5mm

#### 4 Outer Walls

- Outer Wall: Wood Vener Wall Panel or Double glaze glass
- Specifications: 5+20A+5mm or 80mm

M1

SIMPLE

外部展示

# EXTERIOR STYLE



## Standard Configuration

- Structure
- Roof
- 1 Door 3 Windows
- Outer Walls

## Specifications

- |                             |                                  |                                    |                                    |
|-----------------------------|----------------------------------|------------------------------------|------------------------------------|
| • Model: M1                 | • Layout: Standard room          | • Projected Area: 77m <sup>2</sup> | • Indoor Area: 43m <sup>2</sup>    |
| • Top Height: 6.6m          | • Wall Height: 2.8m              | • Exterior Size: 10mx10m           | • Indoor Size: 7.3mx7.3m           |
| • Wind Resistance: Level 12 | • Roof Load: 35KG/m <sup>2</sup> | • Lifespan: 30 Years               | • Moderate Temperature: -30°C~50°C |



# M1

## Optional Interior Configuration & Furniture

### Configuration

- Walls: Wood Veneer Wall Panel
- Flooring: Solid Wood Flooring
- Ceiling: Integrated Ceiling, Bamboo, Solid Wood Beam, Ambient Light
- Separated Bathroom: Glass door, Tile & Aluminum Wall
- Bathroom Facilities: Toilet, Sink, Shower set, Towel Rack

### Furniture

- Solid Wood Bed/Mattress x1
- Nightstand x2
- Bed End Stool x1
- Occasional Table x1
- Occasional Chair x2
- TV Stand x1
- Sideboard x1
- Curtain x1
- TV x1
- Air Conditioner x1
- Water Heater x1
- Chandelier x1



Floor Plan 43m<sup>2</sup>



# M2

外部展示

## EXTERIOR STYLE



### STANDARD CONFIGURATION

Structure, Roof Cover, 1 Door 5 Windows, Outer Walls

#### Specifications

- Model: M2
- Projected Area: 110m<sup>2</sup>
- Exterior Size: 10.5mx13m
- Top Height: 6.8m
- Wind Resistance: Level 12
- Lifespan: 30 Years
- Layout: 1 Living Room, 1 Bedroom
- Indoor Area: 65m<sup>2</sup>
- Indoor Size: 8mx10.5m
- Wall Height: 2.8m
- Roof Load: 35KG/m<sup>2</sup>
- Moderate Temperature: -30°C~50°C

SAFARI  
AND ELEGANT



# M2

## Optional Interior Configuration & Furniture

### Configuration

- Walls: Wood Veneer Wall Panel
- Flooring: Solid Wood Flooring
- Ceiling: Integrated Ceiling, Bamboo, Solid Wood Beam, Ambient Light
- Separated Bathroom: Glass door, Tile & Aluminum Wall
- Bathroom Facilities: Toilet, Sink, Shower set, Towel Rack

### Furniture

- Solid Wood Bed/Mattress x1
- Nightstand x2
- Bed End Stool x1
- Occasional Table x1
- Occasional Chair x2
- TV Stand x1
- Sideboard x1
- Writing Desk/Chair x1
- 2+1 Sofa Set x1
- Tea Table/Chair x1
- Curtain x1
- TV x1
- Air Conditioner x1
- Water Heater x1
- Chandelier x1



Floor Plan 65m<sup>2</sup>



M3

外部展示

# EXTERIOR STYLE

## STANDARD CONFIGURATION

Structure, Roof Cover, 1 Door 8 Windows, Outer Walls



M3

## Specifications

- Model: M3
- Projected Area: 145m<sup>2</sup>
- Exterior Size: 10.5mx18m
- Top Height: 6.8m
- Wind Resistance: Level 12
- Lifespan: 30 Years
- Layout: 1 Living Room, 2 Bedrooms
- Indoor Area: 88m<sup>2</sup>
- Indoor Size: 8mx15.3m
- Wall Height: 2.8m
- Roof Load: 35KG/m<sup>2</sup>
- Moderate Temperature: -30°C~50°C





# M3

## Optional Interior Configuration & Furniture

### Configuration

- Walls: Wood Veneer Wall Panel
- Cupboard: Wood Veneer Cupboard:
- Flooring: Solid Wood Flooring
- Ceiling: Integrated Ceiling, Bamboo, Solid Wood Beam, Ambient Light
- Separated Bathroom: Glass door, Tile & Aluminum Wall
- Bathroom Facilities: Toilet, Sink, Shower set, Towel Rack

### Furniture

- Solid Wood Bed/Mattress x2
- Nightstand x4
- Bed End Stool x12
- Occasional Table x2
- Occasional Chair x4
- TV Stand x1
- Sideboard x1
- Writing Desk/Chair x2
- 2+1+1 Sofa Set x1
- Tea Table/Chair x1
- Diner Table x1 Diner Chairs x4
- Curtain x1
- TV x2
- Air Conditioner x3
- Water Heater x2
- Chandelier x3



Floor Plan 88m<sup>2</sup>



# SHOWCASES

CREATE FOR YOUR IMAGINATION

# ALL FOR GLAMPING



# About Us

**Jumei Glamping** is a glamping products brand of Jumei Tent Technology Co., Ltd. that focusing on providing safari tents, new glamping pods, safari lodge tents and glamping dome tents.

**Jumei Tents and Technology Co., Ltd.** is one of the leading industrial and commercial tent and pre-fabricated structure manufacturers and suppliers in China established in 2015.



Plant  
10000m<sup>2</sup>



Employees  
120



Patents  
30



High and New Tech.  
Enterprise Certificate of China



ISO 9001:2015  
Certification



# Contact Us

## Website

[www.jumei-glamping.com](http://www.jumei-glamping.com)

[www.jumei-tents.com](http://www.jumei-tents.com)



## Email

[info@jumei-tents.com](mailto:info@jumei-tents.com)

[rfq@jumei-tents.com](mailto:rfq@jumei-tents.com)



## WhatsApp

[+86 15360049598](https://wa.me/8615360049598)



## Social Media

Facebook

<https://www.facebook.com/jumeiglamping/>

Youtube

<https://youtube.com/c/jumeitent>



*We're Ready  
for Help!*



THANK  
YOU!

---